

RETAIL BELT LINE ROAD - RISOR SAINT LOUIS PARK



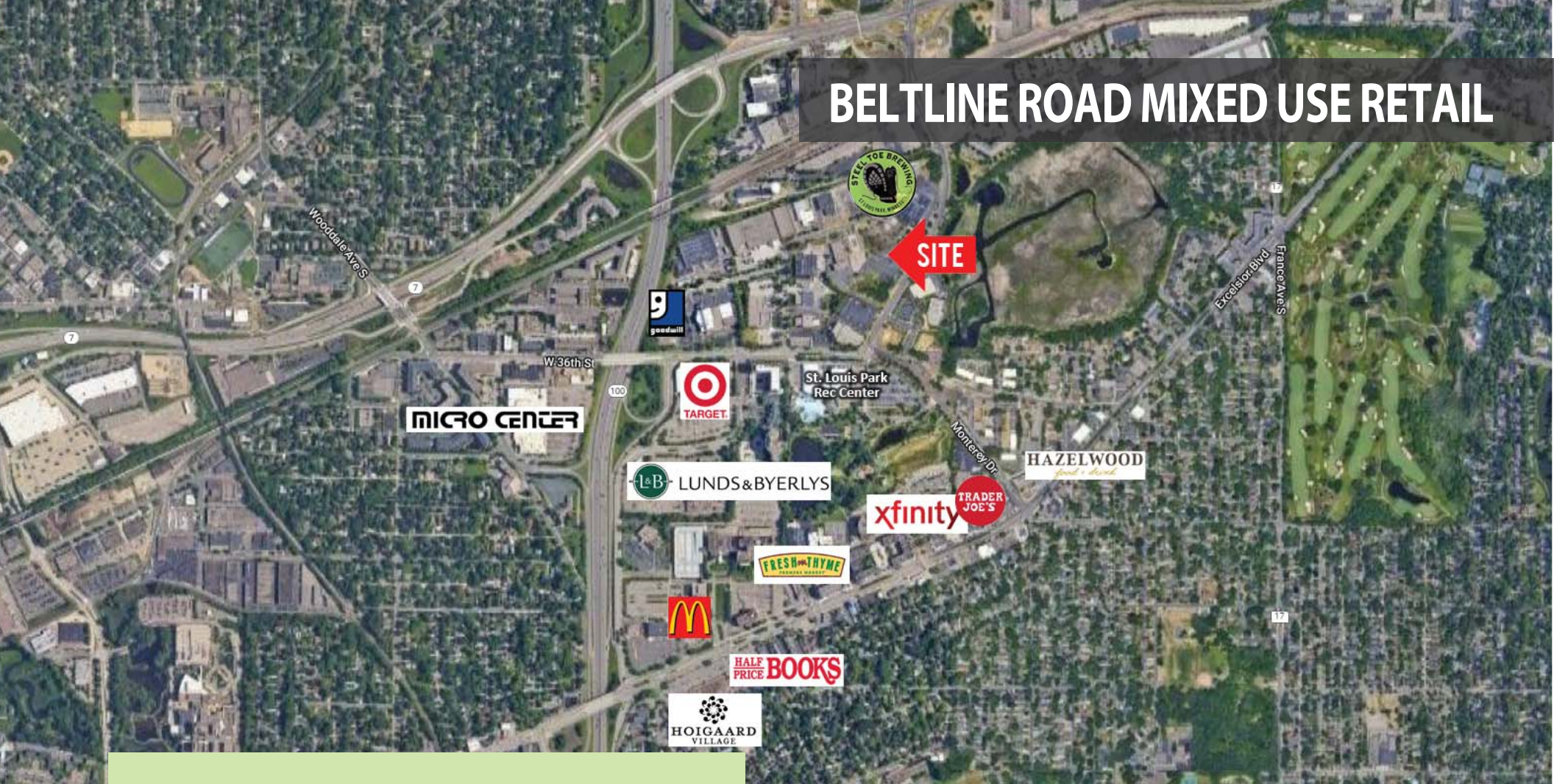
# RISOR SLP ROERS

3510 Beltline Blvd, Saint Louis Park, MN 55416

Bloom Commercial Real Estate  
10050 Crosstown Circle - Suite 600  
Eden Prairie, MN 55344  
[www.bloomcommercial.com](http://www.bloomcommercial.com)



# BELTLINE ROAD MIXED USE RETAIL



## FOR MORE INFORMATION:

Josh Bloom, Principal 651.207.3157  
josh@bloomcommercial.com

Mike Belzer, Associate 651.226.1838  
mike@bloomcommercial.com

- Mixed-Use Apartments with 4000 SF of 1st Floor Retail
- Situated on the Connector from Hwy 7 to 36th Street, both with ramps to Hwy 100

# FEATURES

- Shadow anchored by Target & very busy Lund's & Byerly's
- 4000 SF of retail on the first floor of a new project
  - Mixed-use 55+ apartment project
  - Fast developing area of Saint Louis Park
- Near bike trails, community center, road structure, and shopping

# AREA TENANTS

Target, Lund's & Byerly's, Steel Toe Brewing, LA Fitness, Goodwill, St. Louis Park Rec Center, Hazelwood, Xfinity, Trader Joe's, Core Power Yoga, Fresh Time Market, Sherwin Williams, Hoigaards, McDonalds, Chipotle, Microcenter, & Park Nicollet

# GOLF COURSES

Oak Ridge County Club, Meadowbrook Golf Course, Interlachen Country Club

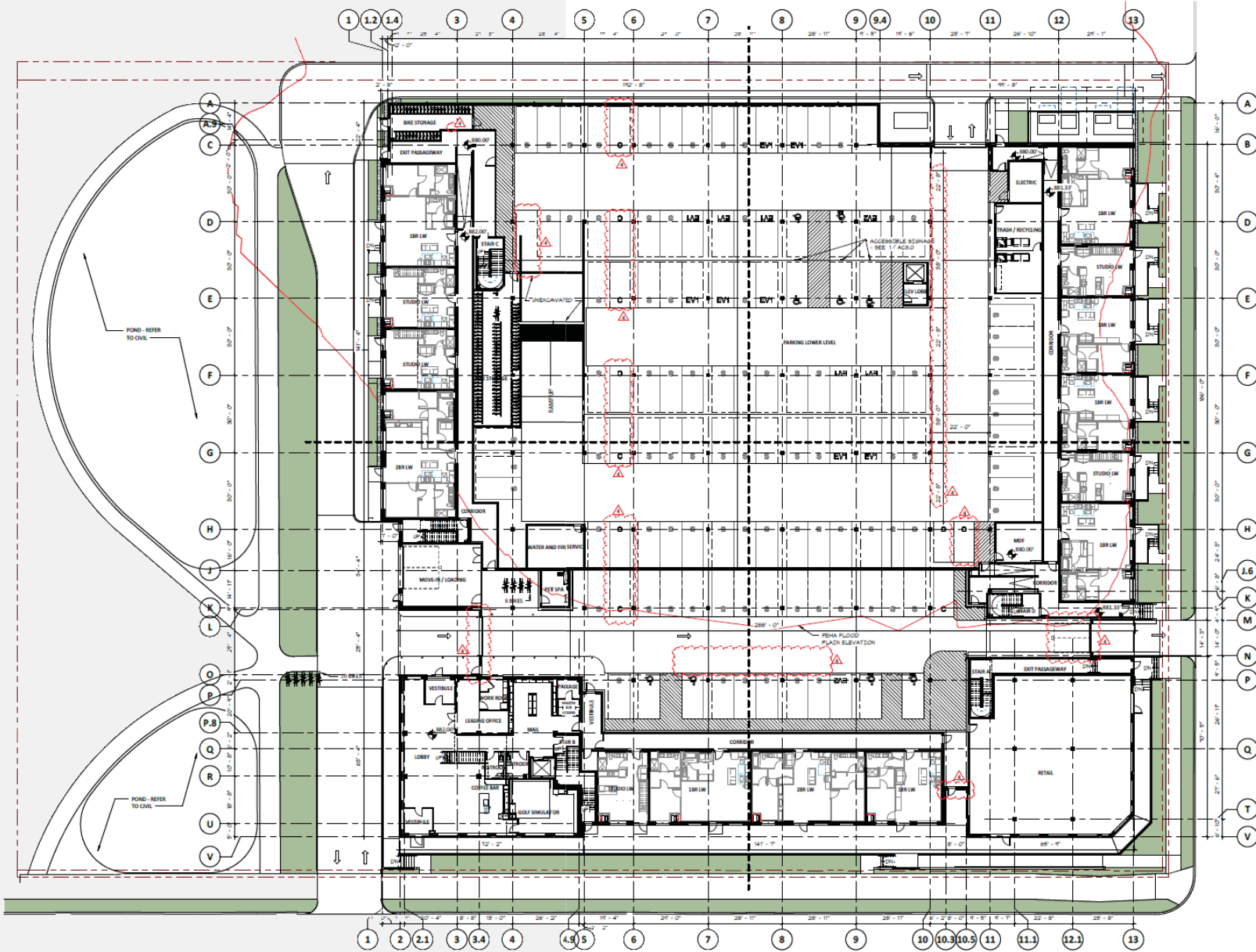
# SITE PLANS

RISOR ST. LOUIS PARK  
3510 Beltline Blvd  
Saint Louis Park, MN 55416



500 Washington Avenue South, Suite 1000  
Minneapolis, MN 55415  
p 612.339.5558 | f 612.339.5382  
www.esgmn.com

I hereby certify that this plan, specification, or report was prepared by me or under my direct supervision and that I am a duly licensed architect under the laws of the State of Minnesota.  
Signature: Christina M. Dege  
Typed or Printed Name: Christina M. Dege  
No. 062312022  
License # 062312022



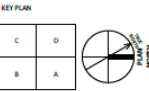
ASI #2  
(05/13/2022)

ORIGINAL ISSUE:  
12/30/2021

REVISIONS:

No.	Description	Date
1	Response #1 to City Comments	09/15/22
2	Response #2 to City Comments	04/09/22
4	ASI #2	5/13/22

221538  
PROJECT NUMBER  
Author: \_\_\_\_\_  
Checked by: \_\_\_\_\_



RISOR ST. LOUIS PARK  
LEVEL 1 OVERALL FLOOR PLAN

## DEMOGRAPHICS

### 5 MINUTES

EMPLOYEES - 21,901  
POPULATION - 29,655  
AVERAGE INCOME - \$89,582

### 10 MINUTES

EMPLOYEES 164,950  
POPULATION 193,949  
AVERAGE INCOME - \$86,354

### 15 MINUTES

EMPLOYEES 633,486  
POPULATION 665,385  
AVERAGE INCOME - \$74,899

BELTLINE ROAD 9,300 VPD

36TH STREET 15,100 VPD

HWY 7 20,500 VPD

HWY 100 113,000 VPD

## FOR MORE INFORMATION:

Josh Bloom, Principal 651.207.3157  
josh@bloomcommercial.com

Mike Belzer, Associate 651.226.1838  
mike@bloomcommercial.com